

# Tower Mount Outdoor Hybrid Enclosure

viaPhoton is constantly innovating to anticipate and meet all of your connectivity needs. The patented Outdoor Hybrid Enclosure (OHE) with surge protection is no exception. The engineered flip-tray mechanism offers dedicated fiber access, optical path testing becomes easier, and maintenance becomes faster. The spring-loaded clip ensures smooth fiber travel and saves time when routing cable. The universal brackets allow the enclosure to be mounted to any horizontal or vertical structure.



## Our Custom Engineered OHE Features

- Easy-access design for fast, on-site fiber and power installation
- NEMA 4X rating for harsh environment protection
- IEC Class 1 Surge Protection Device (SPD) for DC-powered RRH applications
- Uptime preserved in rare instance of SPD failure; RRH units remain powered
- Gland sizes for range of cable diameters (5 mm - 44 mm)

## Outdoor Hybrid Enclosure with Surge Protection

# Specifications



shown:  
patented  
flip-up tray

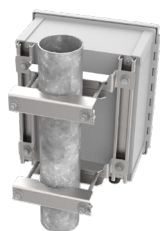
| MODEL NUMBER                       | OHE-xx-xSPD-Gx  | OHE-xx-xSPD-M-Gx   |
|------------------------------------|---|--|
| Dimensions (ext.)                  | 15.5 in H x 13.6 in W x 7.72 in D   | 16.7 in H x 15.5 in W x 7.72 in D  |
| Weight                             | 24 lbs.   | 35 lbs.  |
| Radios Supported                   | up to 6   | up to 9  |
| Fibers                             | 36 max (18 duplex)  | 36 max (18 duplex)   |
| DC conductors                      | 12C (6 pair) 6-14 AWG   | 18C (9 pair) 6-14 AWG  |
| Surge Protection, Class I / Type 1 | up to 6 circuits  | up to 9 circuits   |
| Cable Gland Seal                   | custom configuration for cable diameters 5 mm - 44 mm                             |  |
| Wind Load                          | 150 mph (sustained): 85.72 lb (381.3N)<br>195 mph (sustained): 144.86 lb (644.5N) | 150 mph (sustained): 113.15 lb (503.3N)<br>195 mph (sustained): 191.23 lb (850.6N) |



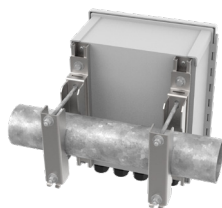
enclosure latches



outdoor enclosure



vertical mount



horizontal mount



custom  
gland sealing



banded option

## STANDARD FEATURES

|                                  |   |
|----------------------------------|---|
| Fiber Type                       | multi-mode or single-mode   |
| DC Termination                   | screw activated with metal plate clamping   |
| Security                         | stainless steel latch with padlock clasp  |
| Outdoor Temp. Range              | -40°C to +80°C  |
| Environmental, Sealing           | NEMA 4X   |
| Cable Entry                      | gland seal  |
| Tower Mount                      | universal stainless steel mount<br>horizontal or vertical pipe, 2 - 4.5 in OD with<br>mounting and banding capabilities |
| Protection Class                 | Class I / Type 1  |
| Voltage Protection Rating        | 400 V (UL 1449)   |
| Nominal Operating Voltage        | 48 VDC  |
| Max Continuous Operating Voltage | 100 VDC   |
| Nominal Discharge Current        | 20kA  |
| Max Surge Current                | 65kA  |
| Response Time                    | ≤25 nanoseconds   |