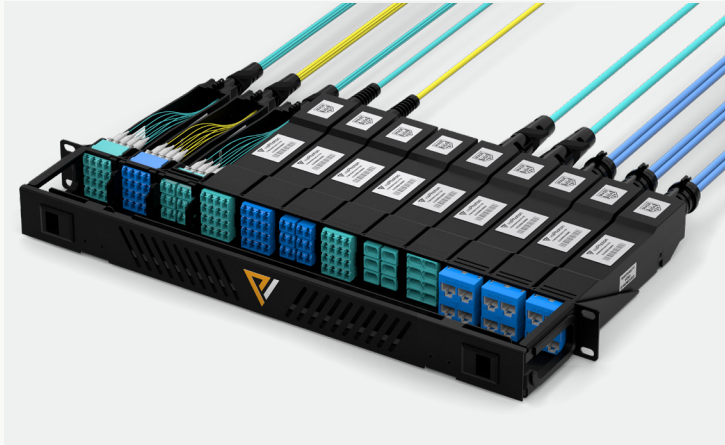


1U Fiber Panel



Features & Benefits

Industry leading density
 Unmatched versatility in a 1U panel

- Fiber LC
- MPO
- CS
- SN

Copper Quad RJ45 CAT6
 Mix and match any connector type

* Available without front-side cable management.
 See Spec Sheet for more information.



Description

Model Number	HDCE-12-UA-FMEXT-RD	
Description	HyperReach™ Panel 1U with 6inch shelf & removable door, with label bracket	
Size	1RU rack height, 19 inch rack	
Maximum Fiber Count	192 fibers (LC module capacity) 2304 fibers (trunk capacity)	
Module Capacity	12	
Modules Supported	HDM-8SM-M8MLC-U	HDM-8M4-M8MLC-U
	HDM-12SM-M12MLC-U	HDM-12M4-M12MLC-U
	HDM-16SM-M8MLC-U	HDM-16M4-M8MLC-U
	HDM-24SM-M12M8-U	HDM-24M4-M12M8-U
	HDM-48SM-M12M8-U	HDM-48M4-M12M8-U
Adapter Panels Supported	HDM-8SM-AP-LC	HDM-8M4-AP-LC
	HDM-12SM-AP-LC	HDM-12M4-AP-LC
	HDM-16SM-AP-LC	HDM-16M4-AP-LC

Compliant to the latest TIA 568, C.3, ISO/IEC 11801, and Telcordia GR-409 standards.
 RoHS compliant. 100% factory tested and pre-terminated to specified length.