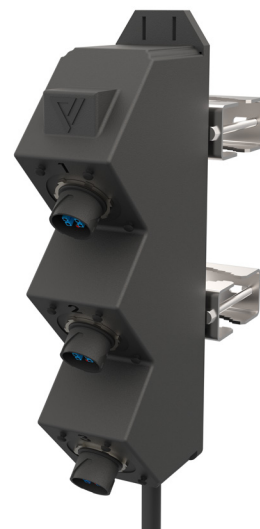


Fiber Power Distribution Module

viaPhoton's Fiber Power Distribution Module is uniquely designed for fast, simple, plug and play fiber and power connectivity using an IP-25 hybrid adapter with multiple mounting options.

- Full hybrid fiber trunk solution – single mode and multi mode options
- Up to 6 conductors / 10, 8, 6 AWG
- LC uniboot, LC duplex, or MPO tower base connectivity options
- Configurations come in 3 port (12 Fiber), 12x12 (Fiber)
- Hybrid Fiber Trunk length is application specific
- IP-25 hybrid connector interface (2 power terminals, 2 LC duplex)
- Entire module and cable assembly is IP-X7 water-seal and UV rated



1x3 (12 fiber, 6 conductors) Module

Part Number: FPDM13-12SM-610-IP25xx-xxx-Fxx

Description: 1x3 Fiber Power Distribution Module, 12 Fiber, mode: (SM) single mode or (M4) OM4 multi mode, 6 conductors, xx AWG (10, 8, 6), IP-25xx, LC or MPO, breakout length xxx (inches), assembly length xx (feet)

Compatible Assembly with IP-25 Hybrid

Hybrid Jumper: Module to Radio

Part Number: OHFJ-4xx2xx-IP25LCU-xx-Fxx

Description: Outdoor Hybrid Fiber Jumper, 4 Fiber, xx mode: (SM) single mode or (M4) OM4 multi mode, 2 conductors xx AWG (10, 8, 6), End 1: IP-25 connector, End 2: LC uniboot, customer variable xx, assembly length xx (feet)

FPDM Module Specifications

Sizing	Width	Height	Depth
1x3, 12 fiber, 6 conductors	88 mm (3.46 in)	421 mm (16.57 in)	181mm (7.13 in)
Cable Shield	copper		
Cable Jacket	PVC, black		
UV Resistance	yes		
Flame Performance	TC-OF / THHN / THWN-2		
End 1 on distribution module	IP-25 hybrid connectors		
End 2	LC or MPO fiber connectors, copper conductors		

Environmental Specifications

Operating Temperature	-40°C to +75°C (-40°F to +167°F)
Storage Temperature	-40°C to +75°C (-40°F to +167°F)
Installation Temperature	-10°C to +65°C (14°F to +149°F)

©2022 viaPhoton, Inc. All rights reserved.