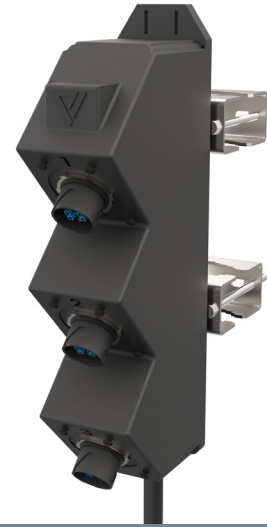


Fiber Power Distribution Module

viaPhoton's Fiber Power Distribution Module is uniquely designed for fast, simple, plug and play fiber and power connectivity using an IP-25 hybrid adapter with multiple mounting options.

- Full hybrid fiber trunk solution – single mode and multi mode options
- Up to 6 conductors / 10, 8, 6 AWG
- LC uniboot, LC duplex, or MPO tower base connectivity options
- Configurations come in 3 port (12 Fiber), 12x12 (Fiber)
- Hybrid Fiber Trunk length is application specific
- Entire module and cable assembly is IP-X7 water-seal and UV rated



1x3 (12 fiber, 6 conductors) Module

Part Number: FPD13-12xx6xx-IPxxx-Fxx

Description: 1x3 Fiber Power Distribution Module, 12 Fiber, XX mode: (SM) single mode or (M4) OM4 multi mode, IP-25, LC or MPO, xxx feet

Hybrid Jumper: Module to Radio

Part Number: OHFJ-4xx4xx-xxxIPx-5xx-Fxx

Description: Outdoor Hybrid Fiber Jumper, 4 Fiber, XX mode: (SM) single mode or (M4) OM4 multi mode, End 1: IP-25 connector, End 2: LC based on radio, power breakout 2x X AWG, xxx foot

Lengths are site specific

SIZING	WIDTH	HEIGHT	DEPTH
1x3 12 fiber, 6 conductors	88 mm (3.46 in)	421 mm (16.57 in)	181mm (7.13 in)

Cable Specifications

Cable Shield	copper
Cable Jacket	PVC, black
UV Resistance	yes
Flame Performance	TC-OF / THHN / THWN-2
End 1 on distribution box	IP-25 hybrid connectors
End 2	LC or MPO fiber connectors, copper conductors

Environmental Specifications

Operating Temperature	-40°C to +75°C (-40°F to +167°F)
Storage Temperature	-40°C to +75°C (-40°F to +167°F)
Installation Temperature	-10°C to +65°C (14°F to +149°F)

©2022 viaPhoton, Inc. All rights reserved.